



◎ ***Supports you and adapts to your specific needs for each mission***

Get the story and go with the CCT Software with CommuniCase® Technology. Part of the most versatile terminals available.

Ku-band now, X-band in a couple of minutes and Ka-band after that? – No problem! - The CCT Software is one of the seven modules of the CommuniCase® Technology's (CCT) unique architecture providing you with a system that helps you to change your CCT terminal key characteristics easily and cost effectively.

The system automatically detects the change and reconfigures settings automatically.

The CCT Software is the ultimate help for monitoring, control and management of your CCT satellite terminal.

KEY FEATURES

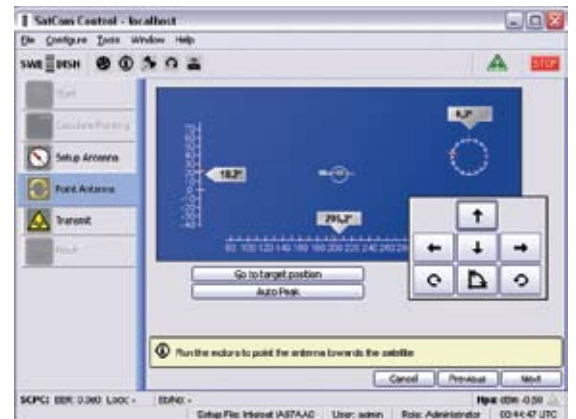
Future proof – A modular system allowing you to change key characteristics of your existing SWE-DISH Suitcase® system leveraging your investment.

Easy to use – The CCT Software provides a very easy and self-explanatory user interface.

Quick deploy – A fully automatic point-and-shoot antenna control, choose a satellite, press a button and start to communicate.

Adaptable – The market unique CCT SDS (Smart Distributed System) enables you an easy way of changing your modular system and the system adapts automatically.

Less training – Common intuitive GUI on all CommuniCase® products (Suitcase, Drive-Away, Fly-Away and SOTM).



GENERAL FEATURES

SW and HW platform	<p>The CCT software that monitors and controls all the modules and functions of the CCT terminal resides on a Linux OS.</p> <p>The HW platform is built by an Embedded Technology Extended (ETX) PC module and a SDS control. The ETX module, a well proven industry standard, will secure compatibility with future PC modules.</p> <p>The SDS (Smart Distributed System) builds on a well-proven car industry standard that offers secure, rugged and reliable communication between all CCT modules.</p>
CCT SDS	<p>The CCT SDS (Smart Distributed System) is used for communication between the CCT modules. Each CommuniCase module has a unique ID recognized by the software. When changing of CCT module (e.g. CCT Transceiver, CCT Antenna System etc.) the settings (like azimuth range, amplifier power, modem etc.) reconfigures automatically without user intervention.</p>
GUI	<p>The monitoring and control software and its GUI are based on Java and can run on any operation system with a Java Runtime Environment (JRE) with version 1.6 and above.</p>
Storage	<p>The CCT Software is stored in the CCT Controller and also supplied in a USB memory with the terminal.</p>
PC GUI or front panel GUI	<p>Separate user interfaces are available through either the PC GUI or the front panel GUI on the CCT Controller.</p>

MAIN GUI FUNCTIONS

Deploying and setting up the Satcom terminal	<p>The GUI is structured, easy to use and self-explanatory, with guides for the user to easily set up the CCT terminal. Ease to use is achieved through a high level of automation (for example, automatic satellite acquisition based on site data retrieved from the built-in electronic compass, inclinometer, and GPS receiver) and pre-defined satellites, satellite channels, and transmission modes stored in the database. The operator does not have to bother with the technical details concerning satellite data and transmission parameters. While on mission, he or she simply selects one of the pre-defined satellites, satellite channels, and transmission modes, which are listed in the GUI.</p>
Antenna pointing	<p>Manual or automatic pointing is supported through the GUI</p>
Monitoring the CCT terminal	<p>The GUI is updated as information on the system changes and warnings are provided if necessary to alert the user of required or suggested actions.</p>
Transmit and receive control of the communication sessions	<p>Control and readings for the HPA and the base band equipment in the GUI</p>

SOFTWARE OPTIONS

Point-and-shoot	<p>Fully automatic, motorized antenna pointing and optimization. The function peaks up on a satellite and starts transmission when activated.</p>
Auto re-start at power failure	<p>Restores the CCT terminal to the settings before power failure.</p>